



1. Create the main body first.

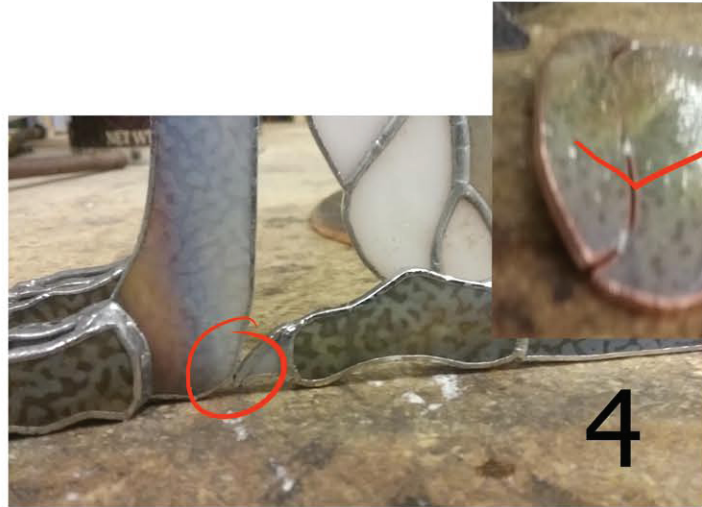


2. When attaching the leg, make sure the body is straight up and down. (I used a coffee can filled with water)

See how the leg is being held just below the shoulder solder line.



3. Attach toes



4. Solder the lower back leg to the back of the front foot.



5. The upper back leg should have an angle.



6. Now attach the upper leg to the lower leg then the leg to the body.

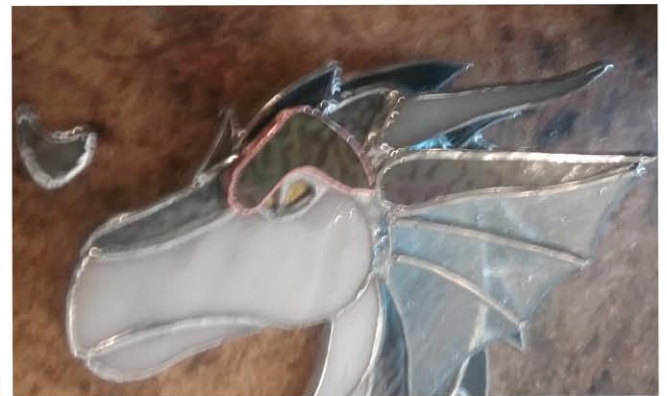
(There needs to be enough room for the wing to fit behind the leg)\_



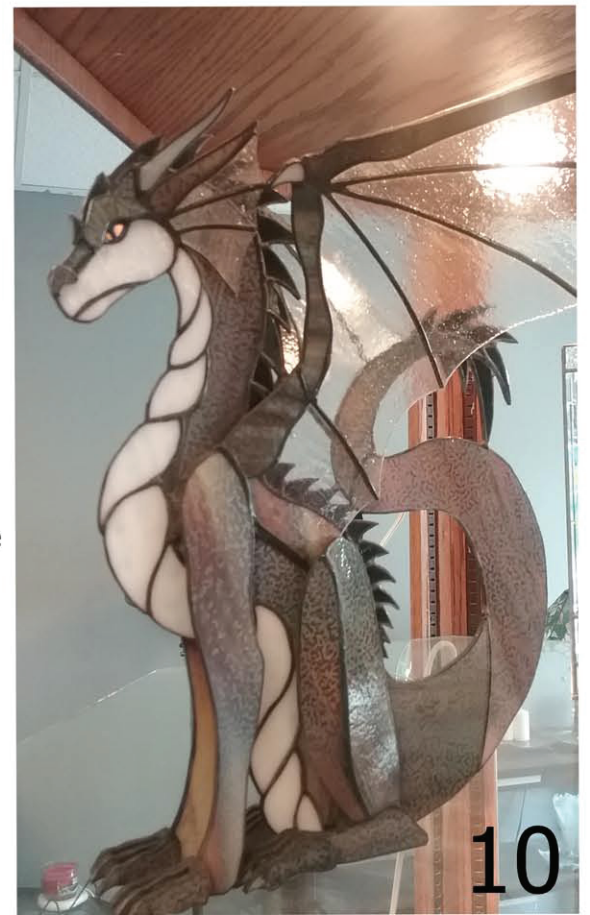
7. After attaching all the legs and toes this is what you should have.



8. Next is the horns, ears, brows and nostrils. Make sure the solder lines on the face are flat where the brow and nostrils go.



9. When putting the wings together, only tack solder to make sure everything goes where it should. The wing should be tucked behind the back leg. To add stability to the wings, solder the wing claw to the ear.



10. Your Done!

10